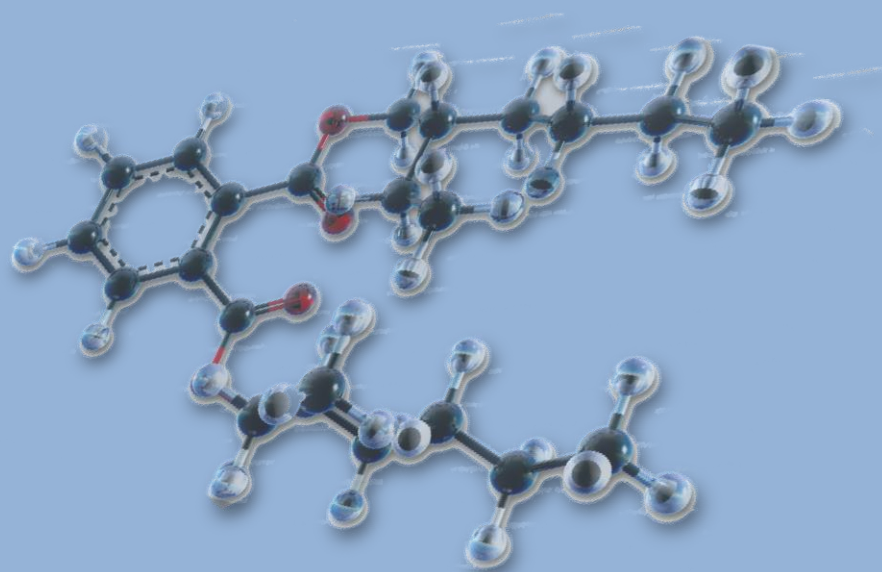


ГЕЯ '99

www.geya99.com | e-mail : gea99@abv.bg | 9000 Варна , ул.Поп Харитон 47
тел./факс: 052/635278 | GSM: 0899/145781

Chemicals

(L)



With the partnership of LACH:NER – a Czech chemical company

lach:ner

INDEX

| | |
|--------------------------------------|----------|
| LACTIC ACID | 2 |
| L-(+)-TARTARIC ACID | 2 |
| LACTOSE MONOHYDRATE | 3 |
| LANTHANUM OXIDE | 3 |
| L-CYSTEINE 99+% | 4 |
| LEAD(II) ACETATE BASIC | 4 |
| LEAD(II) ACETATE TRIHYDRATE | 4 |
| LEAD(II) ACETATE BASIC | 4 |
| LEAD(II) OXIDE YELLOW | 5 |
| L-GLUTAMIC ACID | 5 |
| LITHIUM CARBONATE | 6 |
| LITHIUM HYDROXIDE MONOHYDRATE | 6 |
| LITHIUM CHLORIDE ANHYDROUS | 6 |
| LITHIUM CHLORIDE MONOHYDRATE | 7 |
| LITHIUM NITRATE | 7 |
| LITHIUM SULFATE MONOHYDRATE | 7 |

CHEMICALS (L)

LACTIC ACID

Specifications :

C3H6O3

CAS:79-33-4

EINECS:201-196-2

Density:1l~1,21 kg

Melting point:16 - 26 °C

Molecular weight:90.08

ADR/RID:8

RTECS code:OD2800000

Boiling point:122 °C

Solubility:soluble in water and alcohol

Use:analytical reagent, food industry (baking industry, brewing industry)

Apperance:colourless or yellowish syrupy liquid, hygroscopic

Ordering information :

pure cat.No. 10022-C80

Assay-min. 97 %

10022-C80-M1000-1

1000 ml

L-(+)-TARTARIC ACID

Specifications :

C4H6O6

CAS:87-69-4

EINECS:201-766-0

Melting point:170 °C

Molecular weight:150.09

RTECS code:WW7875000

Solubility:easily soluble in water

Use:complexing agent, preparation of salts of tartaric acid, food industry

Apperance:colourless crystals or white powder

Ordering information :

G.R. cat.No. 10040-AP0

Assay-min. 99.5 %

Iron (Fe)-max. 0.0005 %

Lead (Pb)-max. 0.0005 %

Insoluble substances in H2O-max. 0.005 %

Calcium (Ca)-max. 0.002 %

Sulfates (SO4)-max. 0.01 %

Copper (Cu)-max. 0.0005 %

Phosphates (PO4)-max. 0.002 %

Sulfate ash-max. 0.02 %

10040-AP0-G0100-1 100 g

10040-AP0-G0500-1 500 g

10040-AP0-G1000-1 1000 g

pure cat.No. 10040-CP0

Assay-min. 99 %

Iron (Fe)-max. 0.001 %

Insoluble substances in H2O-max. 0.01 %

Sulfates (SO4)-max. 0.02 %

Phosphates (PO4)-max. 0.005 %

Sulfate ash-max. 0.05 %

10040-CP0-G0500-1 500 g

10040-CP0-G1000-1 1000 g

CHEMICALS (L)

L-(+)-TARTARIC ACID

Specifications :

C4H6O6

CAS:87-69-4

EINECS:201-766-0

Melting point:170 °C

Molecular weight:150.09

RTECS code:WW7875000

Solubility:easily soluble in water

Use:complexing agent, preparation of salts of tartaric acid, food industry

Appearance:colourless crystals or white powder

Ordering information :

Ph. Eur. cat.No. 10040-FP0

Sulfate ash-max. 0.1 %

Calcium (Ca)-max. 200 ug/g

Heavy metals (as Pb)-max. 10 ug/g

Chlorides (Cl)-max. 100 ug/g

Assay (dry subst.)-99.5 - 101.0 %

Sulfates (SO4)-max. 150 ug/g

Spec. optical rotation-+12.0 - +12.8°

Loss on drying (100-105°C)-max. 0.2 %

Oxalic acid-max. 350 ug/g

10040-CP0-G0500-1 500 g

10040-CP0-G1000-1 1000 g

LACTOSE MONOHYDRATE

Specifications :

C12H22O11.H2O

CAS:5989-81-1

EINECS:200-559-2

Melting point:223 °C

Molecular weight:360.32

Solubility:easily soluble in water

Use:pharmaceutical productions, component of culture media for microbiological purposes, chromatographic adsorbent

Appearance:colourless crystals or white powder

Ordering information :

G.R. cat.No. 40088-AP0

Arsenic (As)-max. 0.0002 %

Iron (Fe)-max. 0.002 %

Heavy metals (as Pb)-max. 0.002 %

Spec. optical rotation-+ 52.0 - + 53.0°

Sulfate ash-max. 0.1 %

40088-AP0-G0500-1 500 g

40088-AP0-G1000-1 1000 g

LANTHANUM OXIDE

Specifications :

La2O3

CAS:1312-81-8

EINECS:215-200-5

Melting point:2315 °C

Molecular weight:325.82

RTECS code:DE5330000

Boiling point:2400 °C

Solubility:insoluble in water

Use:glass industry (sodium lamps, optical glass), production of technical ceramics, cores of carbon electrodes for arc lamps

Appearance:white powder

Ordering information :

G.R. cat.No. 30140-AP0

Assay-min. 99.9 %

30140-AP0-G0100-1 100 g

CHEMICALS (L)

L-CYSTEINE 99+%

Specifications :

C₃H₇N₀S₂
CAS:52-90-4
EINECS:200-158-2
Molecular weight:121.15

Ordering information :

not specified cat.No. 40353-BP0

Assay-min. 99 %
40353-BP0-G0025-R 25 g

LEAD(II) ACETATE BASIC

Specifications :

C₄H₈O₆Pb₂
CAS:51404-69-4
EINECS:257-175-3
Melting point:844 °C
Molecular weight:566.50
ADR/RID:6.1
RTECS code:AI5250000
Solubility:soluble in water
Use:sugar analysis according to Horn's method
Apperance:white powder

Ordering information :

according to Horn cat.No. 40119-OP0
Iron (Fe)-max. 0.01 %
Substances insoluble in water-max. 1 %
Assay Pb-min. 70 %
Assay basine Pb min. 30 %
40119-OP0-G1000-1 1000 g

LEAD(II) ACETATE TRIHYDRATE

Specifications :

C₄H₆PbO₄.3H₂O
CAS:6080-56-4
EINECS:206-104-4
Melting point:75 °C
Molecular weight:379.33
ADR/RID:6.1
RTECS code:OF8050000
Boiling point:200 °C
Solubility:readily soluble in water, slightly in alcohol
Use:analytical reagent, e.g. detection of sulphides, chromates, production of other compounds of lead(II), medicine
Apperance:white crystalline powder or crystals

Ordering information :

G.R. cat.No. 40118-AP0

Assay-min. 99.5 %
Iron (Fe)-max. 0.001 %
Chlorides (Cl)-max. 0.0005 %
Insoluble substances in CH₃COOH-max. 0.005 %
40118-AP0-G0100-1 100 g
40118-AP0-G0250-1 250 g
40118-AP0-G1000-1 1000 g

LEAD(II) ACETATE BASIC

Specifications :

Pb(NO₃)₂
CAS:10099-74-8
EINECS:233-245-9
Melting point:470 °C
Molecular weight:331.20
ADR/RID:5.1
RTECS code:OG2100000
Solubility:easily soluble in water
Use:analytical reagent, e.g. in volumetric analysis, preparation of other compounds of lead
Apperance:white crystals

Ordering information :

G.R. cat.No. 30038-AP0

Assay-min. 99 %
Iron (Fe)-max. 0.0005 %
Insoluble substances in H₂O-max. 0.005 %
Chlorides (Cl)-max. 0.0005 %
30038-AP0-G0500-1 500 g
30038-AP0-G1000-1 1000 g

CHEMICALS (L)

LEAD(II) ACETATE BASIC

Specifications :

Pb(NO₃)₂

CAS:10099-74-8

EINECS:233-245-9

Melting point:470 °C

Molecular weight:331.20

ADR/RID:5.1

RTECS code:OG2100000

Solubility:easily soluble in water

Use:analytical reagent, e.g. in volumetric analysis, preparation of other compounds of lead

Apperance:white crystals

Ordering information :

pure cat.No. 30038-CP0

Assay-min. 98 %

Insoluble substances in H₂O-max. 0.05 %

30038-CP0-G0500-1 500 g

30038-CP0-G1000-1 1000 g

LEAD(II) OXIDE YELLOW

Specifications :

PbO

CAS:1317-36-8

EINECS:215-267-0

Melting point:890 °C

Molecular weight:223.19

ADR/RID:6.1

RTECS code:OG1750000

Boiling point:1470 °C

Solubility:insoluble in water

Use:analytical reagent, production of other lead compounds, glass industry

Apperance:yellow powder

Ordering information :

G.R. cat.No. 30145-AP0

Assay-min. 99.0 %

Iron (Fe)-max. 0.001 %

Chlorides (Cl)-max. 0.002 %

Total nitrogen (N)-max. 0.001 %

30145-AP0-G1000-1 1000 g

pure cat.No. 30145-CP0

Assay-min. 98.0 %

Chlorides (Cl)-max. 0.05 %

Loss on ignition-max. 2.0 %

Insoluble substances in CH₃COOH-max. 0.2 %

30145-CP0-G1000-1 1000 g

L-GLUTAMIC ACID

Specifications :

C₅H₉N₀₄

CAS:56-86-0

EINECS:200-293-7

Molecular weight:147.13

RTECS code:LZ9700000

Solubility:readily soluble in hot water

Use:biochemistry – crystallization of proteins

Apperance:colourless crystals or white powder

Ordering information :

G.R. cat.No. 10041-AP0

Assay-min. 99.0 %

10041-AP0-G0100-1 100 g

CHEMICALS (L)

LITHIUM CARBONATE

Specifications :

Li₂CO₃
CAS:554-13-2
EINECS:209-062-5
Melting point:618 - 723 °C
Molecular weight:73.89
RTECS code:OJ5800000
Boiling point:1310 °C
Solubility:hardly soluble in water
Use:analytical reagent, production of other lithium compounds, pharmaceutical productions
Appearance:white powder

Ordering information :

G.R. cat.No. 30214-AP0

Assay-min. 99 %
Iron (Fe)-max. 0.0005 %
Lead (Pb)-max. 0.0005 %
Chlorides (Cl)-max. 0.002 %
Sulfates (SO₄)-max. 0.005 %

30214-AP0-G0050-1 50 g

pure cat.No. 30214-CP0

Assay-min. 98 %

30214-CP0-G0500-1 500 g

LITHIUM HYDROXIDE MONOHYDRATE

Specifications :

LiOH.H₂O
CAS:1310-66-3
EINECS:215-183-4
Melting point:450 - 470 °C
Molecular weight:41.96
ADR/RID:8
RTECS code:OJ6307080
Boiling point:924 °C
Solubility:soluble in water
Use:analytical reagent, production of other lithium salts
Appearance:white crystalline powder, hygroscopic

Ordering information :

pure cat.No. 10005-CP0

Assay-min. 98 %

10005-CP0-G0500-1 500 g

10005-CP0-G1000-1 1000 g

LITHIUM CHLORIDE ANHYDROUS

Specifications :

LiCl
CAS:7447-41-8
EINECS:231-212-3
Melting point:605 °C
Molecular weight:42.39
RTECS code:OJ5950000
Boiling point:1325 °C
Solubility:readily soluble in water
Use:production of ion-selective electrodes (elektrolyt), welding and soldering of light metals and their alloys
Appearance:colourless crystals or white powder, hygroscopic

Ordering information :

G.R. cat.No. 30085-AP0

Assay-min. 98 %
Iron (Fe)-max. 0.005 %
Lead (Pb)-max. 0.005 %
Loss on drying (105°C)-max. 2 %

30085-AP0-G0250-1 250 g

CHEMICALS (L)

LITHIUM CHLORIDE MONOHYDRATE

Specifications :

LiCl.H₂O

CAS:16712-20-2

EINECS:231-212-3

Melting point:614 °C

Molecular weight:60.41

Boiling point:1360 °C

Solubility:readily soluble in water

Apperance:colourless crystals or white powder, hygroscopic

Ordering information :

pure cat.No. 30086-CP0

Assay-min. 95.0 %

30086-CP0-G0100-1

100 g

LITHIUM NITRATE

Specifications :

LiNO₃

CAS:7790-69-4

EINECS:232-218-9

Melting point:255 °C

ADR/RID:5.1

RTECS code:QU9200000

Boiling point:600 °C

Solubility:easily soluble in water

Use:oxidizer, production of ceramic

Apperance:white crystals, hygroscopic

Ordering information :

pure cat.No. 30034-CP0

Assay-min. 98 %

Loss on drying (110°C)-max. 2 %

30034-CP0-G1000-1

1000 g

LITHIUM SULFATE MONOHYDRATE

Specifications :

Li₂SO₄.H₂O

CAS:10102-25-7

EINECS:233-820-4

Melting point:130 °C

Molecular weight:127.90

RTECS code:OJ6419000

Solubility:easily soluble in water

Use: analytical reagent, pharmaceutical productions

Apperance:colourless crystals or white powder, hygroscopic

Ordering information :

G.R. cat.No. 30179-AP0

Assay-min. 99.0 %

Iron (Fe)-max. 0.0005 %

Lead (Pb)-max. 0.0005 %

Chlorides (Cl)-max. 0.002 %

30179-AP0-G1000-1

1000 g